



arlo™

Arlo Pro 2 Quick Start Guide

Welcome

Thank you for choosing Arlo Pro 2.

Getting started is easy.

What's Included



Base station



Base station AC power adapter



Ethernet cable



Arlo Pro 2 Wire-Free Camera



Rechargeable battery



Camera AC power adapter



Camera power adapter cable



Magnetic wall mounts



Mounting screws

1 Use Your Camera Wire-Free

You can use your camera wire-free, powered by the battery, or while plugged into an AC power outlet.

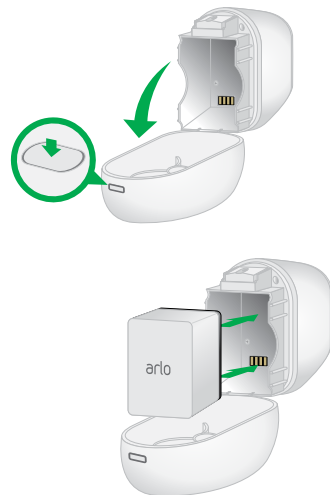
Before using your camera wire-free, you must insert the battery.

Note: You do not need to insert the battery if you are connecting your Arlo camera to an AC power outlet.

➤ To install the battery:

- Unlock the battery compartment by pressing and holding the latch.
- Gently pull the battery door back to open the compartment.
- Align the battery contacts.
- Insert the battery.
- Close the battery door.

Note: The Arlo battery is fully charged when it leaves the factory.



2 Get the App

For the best experience, download the Arlo app for your smartphone by scanning this QR code or searching for Arlo in the app store.



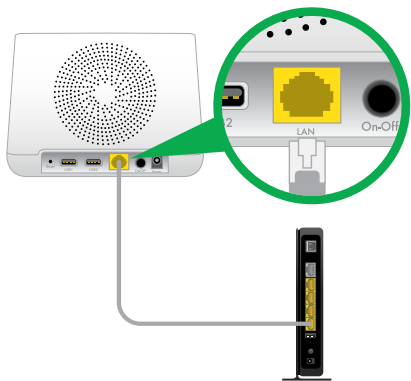
<https://arlo.netgear.com>



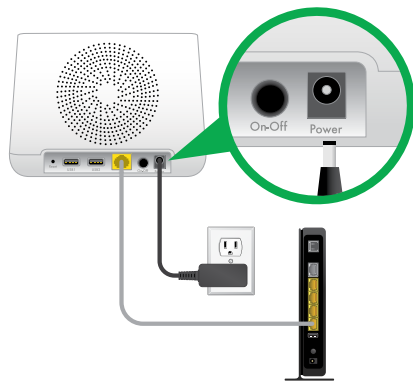
Note: If you already use the Arlo app, make sure that you are using the latest version. To find out if an update is available, go to the app store and search for Arlo.

3 Connect Your Base Station to the Internet

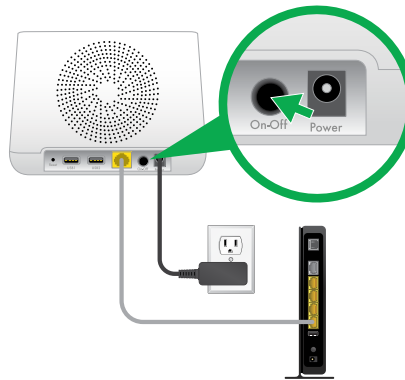
a. Connect the base station to your router using an Ethernet cable.



b. Connect the base station AC adapter to your base station and plug it in.



c. Turn the base station on by pressing the **On/Off** button.



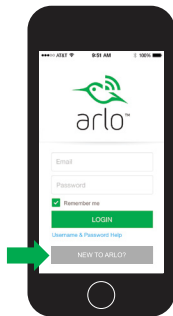
The Power LED and Internet LED on the front of the base station light green in about two minutes.



4 Get an Account

➤ To create a new Arlo account:

- Launch the Arlo app from your smartphone, tap the **New to Arlo?** button, and select **Arlo Wire-Free**.
If you are using a computer, visit arlo.netgear.com.
- Follow the onscreen instructions.



➤ To add an Arlo Pro 2 camera to an existing Arlo account:

- If you already set up an Arlo account, log in, and click or tap **Add Device**.
- Follow the onscreen instructions.

5 Sync Your Cameras With the Base Station

- Bring the camera within 1 to 3 feet (30 to 100 centimeters) of the base station.

Note: Cameras must be synced one at a time.



- b. Press the **Sync** button on the top of the base station for about two seconds and then release the button.



- c. Wait for the Sync Status LED to blink green.
- d. Press the **Sync** button on top of the camera for about two seconds and then release the button.



A blue LED on the camera blinks slowly when the sync process starts. The blue LED blinks rapidly to confirm syncing.



The camera is ready for viewing.

The LED blinks amber if the sync is not successful. You must repeat the sync process.

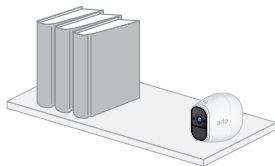
Syncing more than one camera?

Go to Page 9 and repeat steps 5a through 5d for each camera.

6 Place or Mount Your Cameras

You can place your camera on a shelf or other flat surface, or you can mount it to the wall.

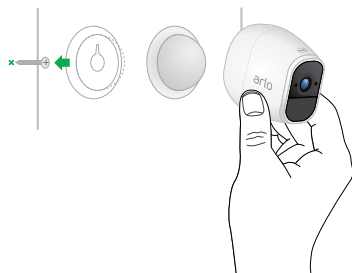
Tip: Use the Arlo app in Position mode (found in Camera Settings) to help aim the camera.



➤ To mount your camera to the wall:

Fasten the mounting screw into the wall, and hang the magnetic mount from the screw.

If you're mounting the camera to drywall, be sure to use the plastic drywall anchors that are provided.

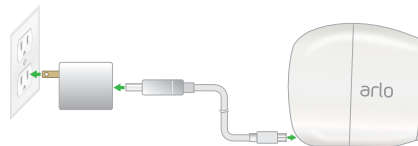


7 Charge Your Arlo Battery

The Arlo battery is fully charged when it leaves the factory.

➤ To recharge the battery:

- Place the camera indoors. If you are using the camera outside, bring it inside while charging the battery.
- Connect the power adapter cable to the camera power adapter.
Note: You must use an Arlo Pro 2 power adapter and cable to charge the battery.
- Connect the other end of the adapter cable to the camera.
- Plug the power adapter into an electrical outlet.



The camera LED lights solid blue when the camera battery is fully charged.



8 Use Your Camera Plugged In

➤ To use your camera plugged in:

- a. Place the camera indoors or use the optional outdoor power adapter, sold separately, when placing outdoors.
- b. Connect the power adapter to an AC electrical outlet.

You're Done!

Congratulations! Your Arlo System is set up and ready to go.

To view useful tutorial videos, find troubleshooting tips, or get support, visit <https://www.arlo.com/support/>.

Base Station LED Guide



Power

Green
The base station is powered on.

Blinking green
A firmware update is in progress. DO NOT TURN OFF THE BASE STATION OR CAMERAS.

Amber
The base station is booting.

Off
The base station is powered off.

Internet

Green
The base station is connected to the Internet.

Blinking green
The base station is sending or receiving data over the Internet.

Amber
The base station is connected to the router but did not establish an Internet connection.

Off
The base station is not connected to your router.

Camera

Green
Cameras are connected to the base station.

Blinking green
The base station is attempting to sync with a camera.

Blinking amber
A camera is too far from the base station. Signal strength is weak.

Off
No cameras are detected.

Notes

Notes

Notes

©NETGEAR, Inc., NETGEAR, the NETGEAR Logo, and Arlo are trademarks of NETGEAR, Inc. Any non-NETGEAR trademarks are used for reference purposes only.

Compliance

For the current EU Declaration of Conformity, visit
http://kb.netgear.com/app/answers/detail/a_id/11621/.

For regulatory compliance information, visit
<http://www.netgear.com/about/regulatory/>.

NETGEAR®

350 East Plumeria Drive
San Jose, CA 95134, USA

CE NETGEAR INTL LTD
Building 3, University Technology Centre
Curraheen Road, Cork, Ireland

August 2017



201-21865-01